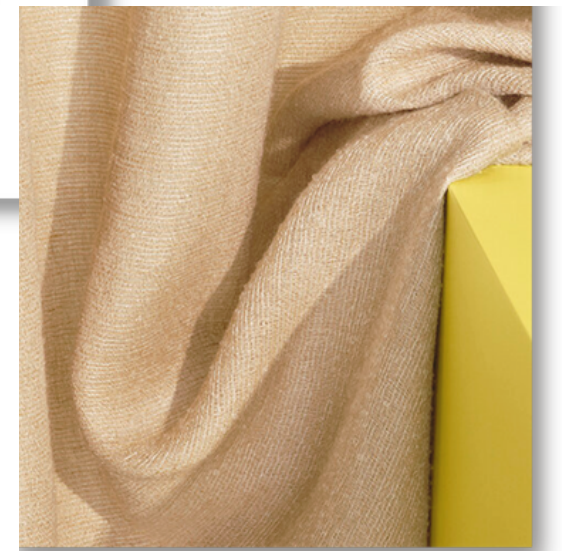


# MOOD BOARD

| MINIMAL  
| TIMELESS  
| SERENE

CELEBRATION OF LOVE  
CREATED BY  
EMPHASIZING  
THE BEAUTY OF NATURE.



# COLOUR PALETTE

| TIMELESS BASE  
| CALM TERRACOTTA  
| UPLIFTING YELLOW

SELECTION OF THE RIGHT  
HUES WILL CREATE A SERENE  
YET LIVELY AMBIENCE THAT  
IS BOTH CALMING AND  
ENERGIZING.





# DESIGN ELEMENTS

| HORIZONTAL LINE



| SYMETRY



| REPETITION



| TEXTURE



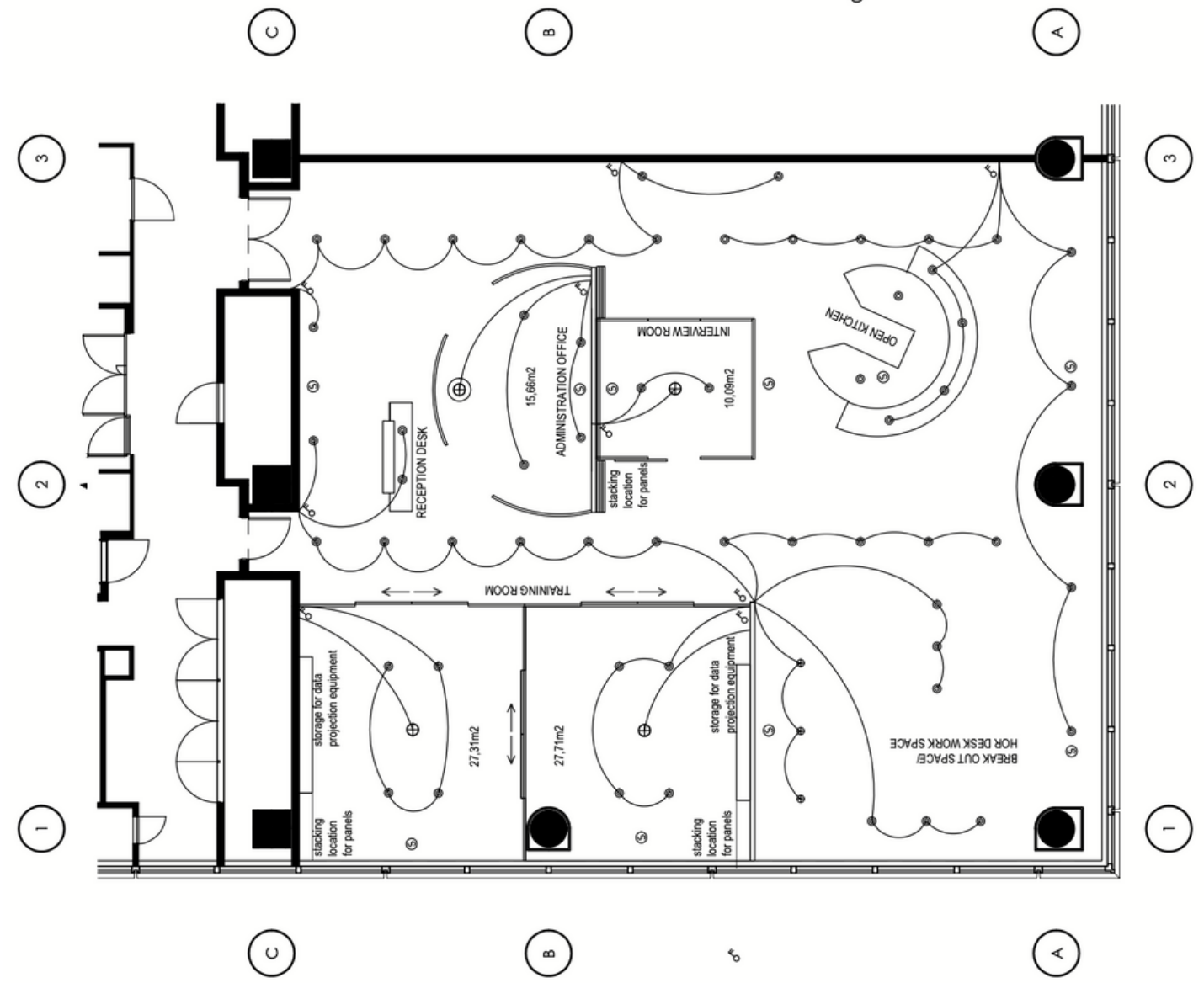




# LIGHTING PLAN

| THOUGHT THROUGH  
| FUNCTIONAL  
| PRODUCTIVITY BOOSTER

WELL LIT SPACE IS ESSENTIAL IF WE  
WANT TO BE FEEL AND LOOK OUR BEST



# SOURCING

- | FURNITURE
- | FIXTURE
- | FINISHES

LF: 03		FOH refer to plan	WALL SCONES	Amber	200 X 100 MM	<a href="https://www.litfad.com/modern-minimalist-style-square-wall-sconce-aluminum-1-light-scones-for-living-room">https://www.litfad.com/modern-minimalist-style-square-wall-sconce-aluminum-1-light-scones-for-living-room</a>
LF: 04		Ground floor and mezzine	CEILING PANELS	White	110 M2	<a href="https://barrisolsydney.com.au/barrisol-translucent">https://barrisolsydney.com.au/barrisol-translucent</a>
LF: 05		BOH refer to plan	CEILING LAMP	White	300 MM	<a href="https://www.marset.com/en/indoor-lighting/ceiling-lamps/sun-ceiling/">https://www.marset.com/en/indoor-lighting/ceiling-lamps/sun-ceiling/</a>
LF: 06		FOH refer to plan	FLOOR LAMP	Light blue	H - 1700 MM	<a href="https://www.madeindesign.co.uk/prod-floor-lamp-modulation-2-metal-blue">https://www.madeindesign.co.uk/prod-floor-lamp-modulation-2-metal-blue</a>
LF: 07		FOH refer to plan	FLOOR LAMP	Yellow	H - 1400 MM	<a href="https://www.madeindesign.co.uk/prod-floor-lamp-petite-modulation-metal-yellow">https://www.madeindesign.co.uk/prod-floor-lamp-petite-modulation-metal-yellow</a>
<b>DOORS</b>						
D:01		BOH ground floor and mezzine	SINGLE SWING DOORS	Grey	2040 x 820 MM	<a href="https://www.completedoorssydney.com.au/catalogue/garrison-commercial-door-cf/">https://www.completedoorssydney.com.au/catalogue/garrison-commercial-door-cf/</a>
D:02		BOH	TOILET SINGLE SWING DOORS	White	2040 x 820 MM	<a href="https://www.completedoorssydney.com.au/catalogue/garrison-commercial-door-cf/">https://www.completedoorssydney.com.au/catalogue/garrison-commercial-door-cf/</a>
D:03		BOH mezzine	SLIDING CAVITY DOOR	White	2040 x 750 MM	<a href="https://www.completedoorssydney.com.au/catalogue/garrison-commercial-door-cf/">https://www.completedoorssydney.com.au/catalogue/garrison-commercial-door-cf/</a>
D:04		Entry	SLIDING TRACK DOUBLE DOORS / FRAME WITH GLASS	Matt black	2040 x 900 MM	<a href="https://www.completedoorssydney.com.au/catalogue/garrison-commercial-door-cf/">https://www.completedoorssydney.com.au/catalogue/garrison-commercial-door-cf/</a>
H:01		D1 & D2	DOORS HARDWARE	Matt black	1200m x 400 MM	<a href="https://www.completedoorssydney.com.au/catalogue/garrison-commercial-door-cf/">https://www.completedoorssydney.com.au/catalogue/garrison-commercial-door-cf/</a>
<b>EQUIPMENT</b>						
E:01		Toilet	BASIN	White	450 X 650 MM	<a href="https://www.google.com/url?q=https://www.swanstreet.com.au/ECT-Global-Exon-Back-Entry-or-Bottom-Inset-Toilet-Suite-with-Universal-Trap-787181&amp;sa=D&amp;source=websearch&amp;usq=__">https://www.google.com/url?q=https://www.swanstreet.com.au/ECT-Global-Exon-Back-Entry-or-Bottom-Inset-Toilet-Suite-with-Universal-Trap-787181&amp;sa=D&amp;source=websearch&amp;usq=__</a>
E:02		Toilet	TOILET	White	700 X 550 MM	<a href="https://www.google.com/url?q=https://www.swanstreet.com.au/ECT-Global-Exon-Back-Entry-or-Bottom-Inset-Toilet-Suite-with-Universal-Trap-787181&amp;sa=D&amp;source=websearch&amp;usq=__">https://www.google.com/url?q=https://www.swanstreet.com.au/ECT-Global-Exon-Back-Entry-or-Bottom-Inset-Toilet-Suite-with-Universal-Trap-787181&amp;sa=D&amp;source=websearch&amp;usq=__</a>
E:03		Kitchenete	FRIDGE	Silver	2400 X 700 X 900 MM	<a href="https://www.ikea.com/no/no/p/puppakalla-koj-fryseskap-ikea-300-frittstaende-rustfritt-stalfarge-90490122/?utm_source=google&amp;utm_medium=surfaces&amp;utm_campaign=google">https://www.ikea.com/no/no/p/puppakalla-koj-fryseskap-ikea-300-frittstaende-rustfritt-stalfarge-90490122/?utm_source=google&amp;utm_medium=surfaces&amp;utm_campaign=google</a>
E:04		Kitchenet	KITCHENET	white	600 X 850 MM	<a href="https://www.google.com/url?q=https://www.swanstreet.com.au/Laundry-Cupboard-Kitchen-Cabinet-Assembled-Builders-White-1200mm-wide-Riteway-2711190">https://www.google.com/url?q=https://www.swanstreet.com.au/Laundry-Cupboard-Kitchen-Cabinet-Assembled-Builders-White-1200mm-wide-Riteway-2711190</a>
E:05		Kitchenet	SINK	silver	690 x 470 MM	<a href="https://www.ikea.com/no/no/p/vattudalen-innbyggings-kum-1-kum-m-avrenning-rustfritt-stal-s69158168/?utm_source=google&amp;utm_medium=surfaces&amp;utm_campaign=google">https://www.ikea.com/no/no/p/vattudalen-innbyggings-kum-1-kum-m-avrenning-rustfritt-stal-s69158168/?utm_source=google&amp;utm_medium=surfaces&amp;utm_campaign=google</a>
<b>FURNITURES</b>						
FU:01		BOH	Unit	White	H 1800 X 600 X 1200 MM	<a href="https://www.ikea.com/us/en/p/kallax-shelf-unit-white-80275887/">https://www.ikea.com/us/en/p/kallax-shelf-unit-white-80275887/</a>
FU:02		Break out	Bench	Oak	H 450 X 450 X 1200 MM	<a href="https://www.ikea.com/sg/en/p/moerbylaga-bench-oak-veneer-brown-stained-20396439/">https://www.ikea.com/sg/en/p/moerbylaga-bench-oak-veneer-brown-stained-20396439/</a>
FU:03		Break out	Table	Oak	H 750 X 600 X 1400 MM	<a href="https://www.ikea.com/sg/en/p/pekedalen-extendable-table-oak-60340775/">https://www.ikea.com/sg/en/p/pekedalen-extendable-table-oak-60340775/</a>
FU:04		Consultation zone	Armchair	Cobalt blue	H 870 X 750 X 780 MM	<a href="https://www.pamono.com.au/block-armchair-studio-modern">https://www.pamono.com.au/block-armchair-studio-modern</a>
FU:05		Consultation zone	Coffee table	Stone/ glass	H 400 X R 910	<a href="https://www.pamono.com.au/coffee-table-in-travertine-and-smoked-glass-1970s">https://www.pamono.com.au/coffee-table-in-travertine-and-smoked-glass-1970s</a>
FU:06		Office	Office desk	Oak	630 X 430 MM	<a href="https://www.ikea.com/us/en/p/bekant-corner-desk-left-white-stained-oak-veneer-black-s69282808/#content">https://www.ikea.com/us/en/p/bekant-corner-desk-left-white-stained-oak-veneer-black-s69282808/#content</a>



3D



| VIEW FROM LIVING ROOM



3D



| OFFICE SIDE VIEW/ELEVATION



3D



| OFFICE SIDE VIEW/SECTION INSIDE



3D



| OFFICE SIDE VIEW/SECTION WITH OPEN MURPHY BED